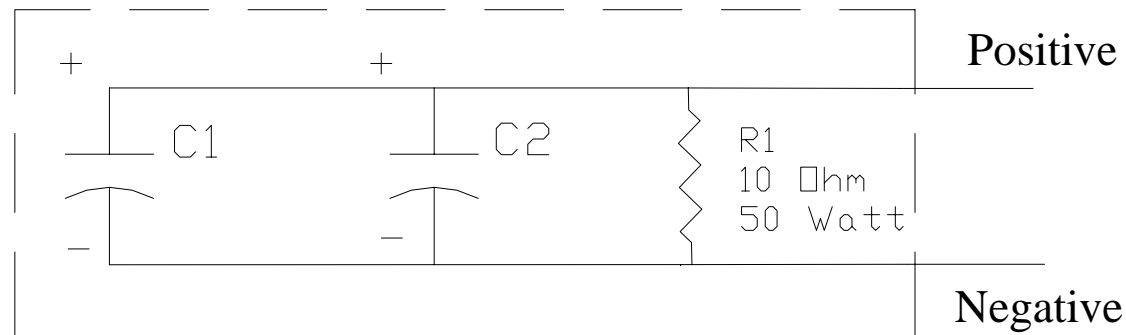


"SIMULATED BATTERY"



C1,C2 - 50,000mfd 15-20 wvDC
R1 - 10 Ohm 50 Watt wirewound

Notes-

1. Connect to output of Ferro-resonant converter or Linear converter charging output only!!
2. Use 2 "simulated battery" units if testing ferro-resonant converters at full load with amperage outputs of 55 amperes or above.